

GATEWAY

Commercial cum Residential Complex
Opp. Westline Medicity, Morgangate
Jeppu, Mangalore

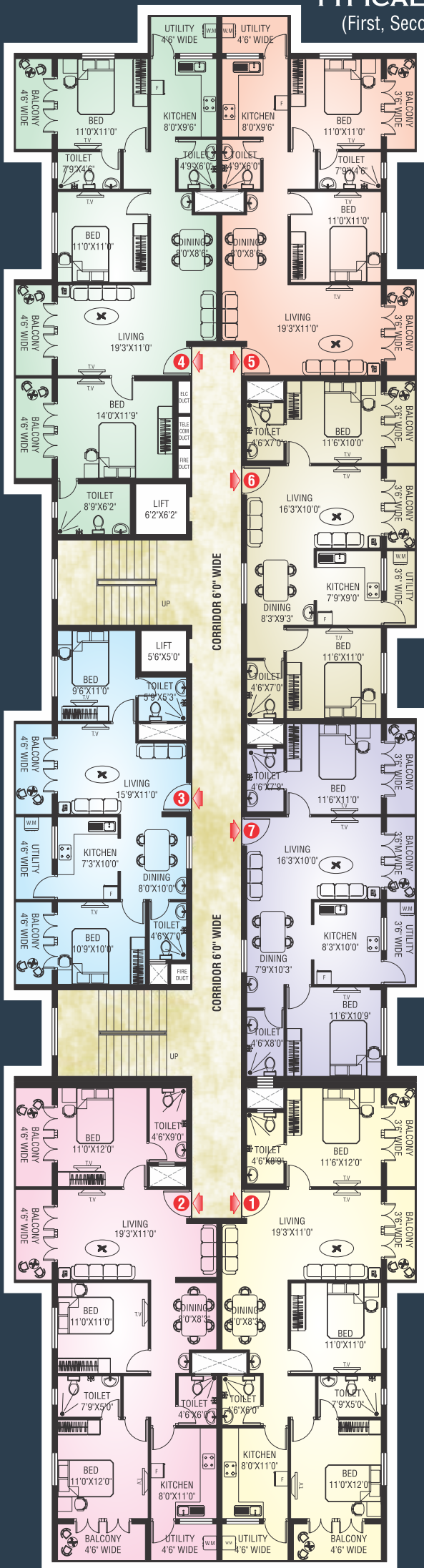


Registration No :
ACK/KA/RERA/1257/334/
PR/141223/00767



TYPICAL FLOOR PLAN

(First, Second, Third & Fourth)



SPECIFICATIONS

- ◆ Ground + 4 floors building with basement car parking
- ◆ 2 automatic elevators of 8 and 6 passenger capacity
- ◆ Spacious entrance lobby on ground floor
- ◆ Generator for Common, Commercial & Apartment lighting with sound proof closure
- ◆ Melamine polished main doors
- ◆ Vitrified 2'x2' tiles inside the flats
- ◆ C.C. T.V Camera on the main gate entrance and surrounding
- ◆ Granite flooring on all common area and vitrified tiles for staircase
- ◆ Reticulated gas connection to all apartments
- ◆ Powder coated aluminum windows /upvc with grills
- ◆ Putty finish inside the flats & apex paint for exterior
- ◆ AC point in all Bed rooms
- ◆ Granite kitchen platform, dado tiles up to 2' with Stainless sink
- ◆ Water proof treatment done for sunken R.C.C Slabs
- ◆ Hot and cold diverter units in all bedrooms
- ◆ Anti skid tiles for bathroom flooring
- ◆ Wooden door frames with Flush door shutters & P.V.C. doors for bathrooms
- ◆ Provision of EV charging points at the car parking area

LOCATION MAP



Area Statement

Flat No. 1(3 BED)	1420 SFT
Flat No. 2(3 BED)	1415 SFT
Flat No. 3(2 BED)	960 SFT
Flat No. 4(3 BED)	1455 SFT
Flat No. 5(2 BED)	1085 SFT
Flat No. 6(2 BED)	975 SFT
Flat No. 7(2 BED)	1035 SFT



Promoters :



3rd Floor, Westgate Terminus, Falnir, Mangalore - 575 002

☎ : +91 89712 70999, +91 63660 99555

🌐 : www.smrcorp.in ✉ : smrcorporation99@gmail.com

Land owners :

Bearys Associates L.L.P

Architects

shenoy associates

architecture designers & valuers

No 19 & 20, IIIrd Floor, Manasa Towers, Kodialbail, Mangalore - 575 003